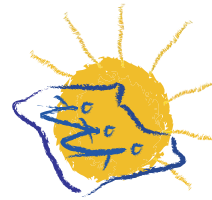




# Early Childhood and Family Services



**THE MAINE EDUCATIONAL CENTER FOR THE DEAF AND HARD OF HEARING**  
STATEWIDE EDUCATIONAL SERVICES  
One Mackworth Island  
Falmouth, ME 04105



THE MAINE EDUCATIONAL CENTER  
FOR THE DEAF AND HARD OF HEARING  
STATEWIDE EDUCATIONAL SERVICES

## **Please Contact:**

*Coordinator*

Early Childhood and  
Family Services  
Maine Educational Center for the  
Deaf and Hard of Hearing

One Mackworth Island  
Falmouth, ME 04105

[www.mecdhh.org](http://www.mecdhh.org)

207-781-6335 V/TTY  
207-781-6220 Fax  
Statewide Toll-free:  
1-866-231-8910

Non-Profit Org.  
U.S. Postage  
PAID  
Portland, ME  
Permit 104



# Early Childhood and Family Services

*ECFS provides services to families with children newborn to five years of age who are deaf, hard of hearing or have a suspected hearing loss.*



**W**e provide information to families and professionals state-wide, support the choices that families make to benefit their

children and assist them with identifying the resources that will help them meet the individual needs of their infant or young child.



*Home observation visit.*

***Home visits are offered to families to provide unbiased information about:***

- Early childhood development
- Hearing loss
- Auditory skills development and amplification
- Communication and technology options
- Education and program resources
- Funding options
- Networking and mentoring

ECFS consultants are available for observations and consultations in daycare and preschool settings. We are also available for participation in



Early Childhood and Pupil Evaluation Team Meetings.

Our program collaborates with the child's Early Childhood Team and provides opportunities for statewide networking for families, providers and agencies.

Services are provided at no cost to families.

***We have a diverse professional staff with the following backgrounds:***

- Teachers of the Deaf
- Parent Infant Specialists
- Early Childhood Educators
- Speech Language Pathologist
- Educational/Pediatric Audiologist
- Special Educators
- Family Therapist