

Kids Like Me Regional Peer Support Groups

Program Intent

Children who are deaf or hard of hearing need peer support in order to comprehend and share how this impacts every aspect of their daily lives.



Learning that there are others who have similar experiences and frustrations helps children to understand and accept what it means to be deaf or hard of hearing while maintaining a positive self-image. Providing a deaf/hard of hearing adult role model who shares these issues as well is an integral part of the program, promoting self-esteem and a "can-do" attitude.

Program Components

Each program works to meet the unique needs of public school children who are deaf or hard of hearing in a specific geographical area.

Students are grouped according to grade level, kindergarten through grade twelve, with a minimum of six and a maximum of fifteen students per group.

Student Groups

K Through 5

Groups made up of students from kindergarten through grade five meet two hours a week for eight consecutive weeks.

Experiential learning activities like games, journaling, role playing, art projects, problem solving, small group discussions and assistive technology demonstrations are designed to build assertive listening and communication skills, self-esteem, leadership, personal awareness and a strong, positive identity as a deaf or hard of hearing individual.

Six through Twelve

Groups of students from grades six to twelve meet for two consecutive days (one overnight) with other mainstreamed students for a total of



24 hours of fun, exciting programs that provide a stimulating context for building friendships and self-advocacy skills, expressing thoughts and feelings, and sharing cooperative learning experiences like games, canoeing, kayaking, hiking, camping out, orienteering, rock climbing, challenging themselves on Mackworth Island's ropes course and other activities in the great outdoors.

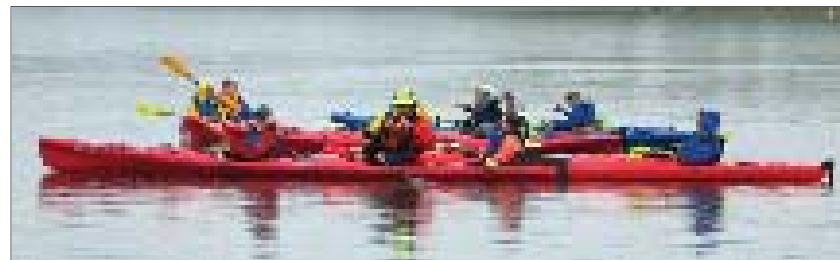
Three two-day sessions a year are offered and students are strongly encouraged to attend all three sessions to reap the greatest benefit from the program.

Communication

One of the State of Maine Learning Results Guiding Principles states that all students must leave school as "clear and effective communicators". This is one of the primary goals of our student peer support groups. Each child's preferred mode of communication will be accommodated.

Regional areas

Peer support groups are established based on the number of students within a one-hour commute from four central sites: Portland, York, Lewiston and Bangor.



Information for Local School Districts

Interpreters, transliterators and educational technicians used by the students within their academic program will also be used during the peer support groups, and districts are responsible for transporting students to and from the program site.

An MECDHH health form must be completed for each student and given to the group facilitator/MECDHH staff person.

In the event that a student is unable to attend a session, the student's school should notify the Regional Program Coordinator at (207) 781-6228.

Please Contact:

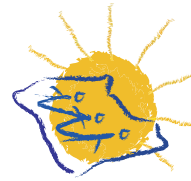
Coordinator

Kids Like Me

Maine Educational Center for the
Deaf and Hard of Hearing
One Mackworth Island
Falmouth, ME 04105

www.mecdhh.org

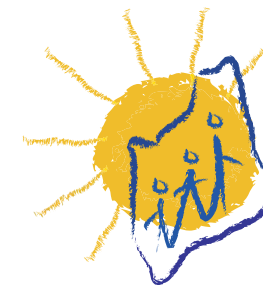
207-781-6228V/TTY
207-781-6220 Fax



THE MAINE EDUCATIONAL CENTER FOR THE DEAF AND HARD OF HEARING
STATEWIDE EDUCATIONAL SERVICES
One Mackworth Island
Falmouth, ME 04105

Non-Profit Org.
U.S. Postage
PAID
Portland, ME
Permit 104

kids like me



THE MAINE EDUCATIONAL CENTER
FOR THE DEAF AND HARD OF HEARING
STATEWIDE EDUCATIONAL SERVICES