



Parent Infant/Toddler Program



The Parent Infant/Toddler Program provides a family-centered team approach to support development in the child's early years.

We support the language and intervention choices that families make to benefit their children. The program assists families in identifying and connecting with appropriate resources. In the playgroup setting, all children are provided the opportunity to learn in a natural, nurturing, developmentally-appropriate environment.

Program Eligibility

The program serves children from newborns to age three who are deaf, hard of hearing or have a suspected hearing loss. Each child in the program will have an Individualized Family Service Plan (IFSP) coordinated through Child Development Services.

Parent Infant/Toddler Team

- Family
- Parent Infant Specialist/Teacher of the Deaf
- Deaf Mentor
- Audiologist
- Occupational Therapist
- Speech-Language Pathologist
- Family Therapist
- American Sign Language Teacher

Siblings

Siblings of children in the program, ages newborn to three, are welcome to join the Parent Infant/Toddler Program. Siblings ages three to five are welcome to join the ASL portion of the Preschool Program. Participation by siblings is dependent on space availability.

Program Components

- Play group
- Family Support Group Meetings
- Audiologic Consultation
- Speech and Language Group
- Occupational Therapy
- Family Sign Language Class



Additional Services

- Home visits
- Occasional evening family meetings
- Early Childhood Team meetings
- Transition planning
- Collaboration with other agencies





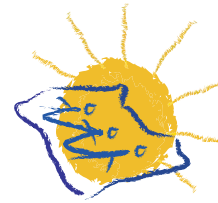
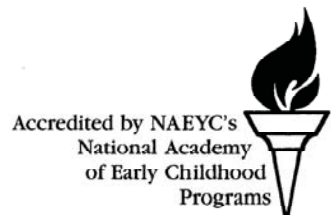
Please Contact:

Coordinator

Parent Infant/Toddler Program
 Maine Educational Center for the
 Deaf and Hard of Hearing
 Mackworth Island
 Falmouth, ME 04105

www.mecdhh.org

207-781-6213 V/TTY
 207-781-6220 Fax
 Statewide Toll-free:
 1-866-231-8910



THE MAINE EDUCATIONAL CENTER FOR THE DEAF AND HARD OF HEARING
 STATEWIDE EDUCATIONAL SERVICES
 One Mackworth Island
 Falmouth, ME 04105

parent infant/toddler program



THE MAINE EDUCATIONAL CENTER
 FOR THE DEAF AND HARD OF HEARING
 GOVERNOR BAXTER SCHOOL FOR THE DEAF

Non-Profit Org.
 U.S. Postage
 PAID
 Portland, ME
 Permit 104