

More Information

The Preschool runs Monday through Thursday mornings from 8 am to noon. During the last two quarters of the school year, there is an afternoon transition program for children who will be kindergarten age in the upcoming fall.

The Early Childhood Team will determine placement in the Preschool Program:

- Family
- Teacher of the Deaf
- Educational Audiologist
- Speech/Language Therapist
- Occupational Therapist
- Teacher assistant
- Preschool Coordinator

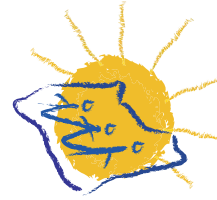
Please Contact:

Coordinator

Governor Baxter School
for the Deaf
One Mackworth Island
Falmouth, Maine 04105

www.mecdhh.org

207-781-6221 TTY
207-781-6220 Fax



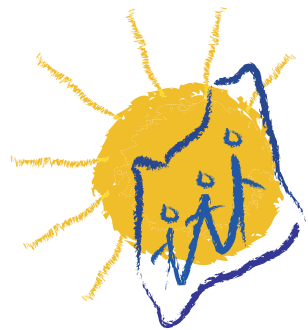
THE MAINE EDUCATIONAL CENTER FOR THE DEAF AND HARD OF HEARING
GOVERNOR BAXTER SCHOOL FOR THE DEAF
One Mackworth Island
Falmouth, ME 04105

preschool program



THE MAINE EDUCATIONAL CENTER
FOR THE DEAF AND HARD OF HEARING
GOVERNOR BAXTER SCHOOL FOR THE DEAF

Non-Profit Org.
U.S. Postage
PAID
Portland, ME
Permit 104



Preschool Program

The Preschool Program offers a language-enriched developmentally-based program of learning for deaf and hard-of-hearing children ages 3 to 5 years old. The program is rich in experiences which foster and nurture the child's language development and sense of self. IFSP goals are followed in the daily plans in the Preschool.



It is our belief that children learn through play. The Preschool schedule provides many opportunities for children to interact and learn through play, in structured, center-based and unstructured settings.

ASL Preschool

The ASL Preschool is a bilingual environment, offering children American Sign Language (ASL) as the language of daily interactions and communication in the classroom, and English in print, as developmentally appropriate. Both languages overlap in many ways and one often supports the other. Preschool-aged siblings are welcome to join the preschool depending on space availability.



Program Eligibility

Chronological ages: 3 to 5 years old

Documented hearing loss

Each child will have a current Individualized Family Service Plan (IFSP), or Individual Education Plan (IEP).

Additional Services

Home visits

Collaboration with other agencies

Audiology

Occupational Therapy

Speech and Language Therapy

Attendance at ECTs and PETs

Sound 'n Sign Preschool

The Sound 'n Sign Preschool utilizes spoken/written English and American Sign Language (ASL) as two separate languages. Children spend a portion of the morning in the ASL Preschool, then move to the Sound 'n Sign classroom. Children will be encouraged in auditory, listening and oral language skills.

Expressive and receptive ASL growth and development will also be fostered.

Program Eligibility

Chronological ages: 3 to 5 years old

Documented hearing loss

Children must have sufficient access to spoken language through residual hearing or amplification.

Each child will have a current Individualized Family Service Plan (IFSP), or Individual Education Plan (IEP).

