



Maine Educational Center for
the Deaf and Hard of Hearing/
Governor Baxter School for the
Deaf

Strategic Plan 2030

Our Mission

In collaboration with families and professionals throughout Maine, we provide transformative learning, language-focused education, and opportunities for social-emotional growth, empowering Deaf and Hard of Hearing individuals, birth to 22, to reach their full potential.



mecdhh.org



Our Vision



A community where all individuals, families, and professionals are united in support of Deaf and Hard of Hearing success.

Focus Area 1

Statewide Impact & Equity

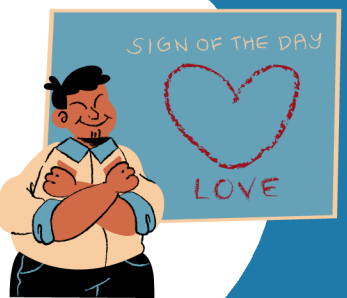
Strengthen services, promote resources and improve communication



Focus Area 2

Excellence in Talent

Attract, develop and retain high quality staff who deliver exceptional service



Focus Area 3

Partnerships & Advocacy

Strengthen collaboration with DHH organizations and the Maine DOE to elevate MECDDHH/GBSD's impact and visibility

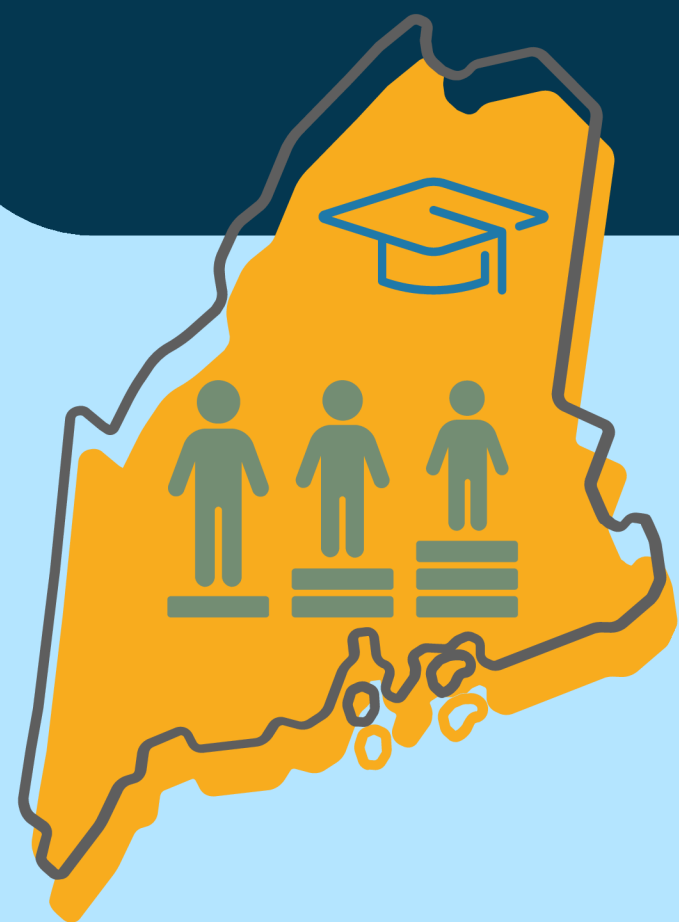


Strategic Plan 2030

Focus Area 1

STATEWIDE IMPACT AND EQUITY

Strengthen services, promote resources, and improve communication



mecdhh.org



THE MAINE EDUCATIONAL CENTER
FOR THE DEAF AND HARD OF HEARING
GOVERNOR BAXTER SCHOOL FOR THE DEAF

Critical Initiatives

1.1

Improve, refine, strengthen services to meet the needs of DHH children and their families



1.2

Recreate and promote effective resources



1.3

Improve communication with school districts and families about MECDDHH/GBSD services

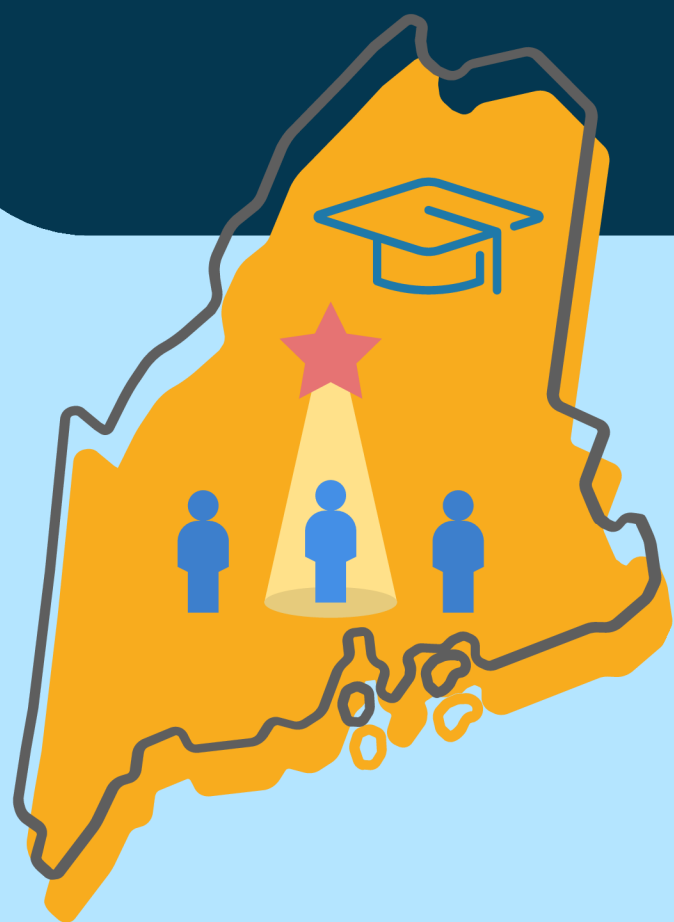


Strategic Plan 2030

Focus Area 2

EXCELLENCE IN TALENT

Attract, develop and retain high quality staff who deliver exceptional services



mecdhh.org



THE MAINE EDUCATIONAL CENTER
FOR THE DEAF AND HARD OF HEARING
GOVERNOR BAXTER SCHOOL FOR THE DEAF

Critical Initiatives

2.1

Build capacity of staff to meet the needs of all DHH children



2.2

Increase staff retention rates



2.3

Improve recruitment of new talent



Strategic Plan 2030

Focus Area 3

PARTNERSHIPS AND ADVOCACY

Strengthen collaboration with DHH organizations and the Maine DOE to elevate MECDHH/GBSD's impact and visibility



mecdhh.org



THE MAINE EDUCATIONAL CENTER
FOR THE DEAF AND HARD OF HEARING
GOVERNOR BAXTER SCHOOL FOR THE DEAF

Critical Initiatives

3.1

Build collaborative resources and connections with national Deaf Education Program peers



3.2

Connect/Reconnect with state and national organizations beyond schools that support Deaf Education. Identify potential partners and cultivate those partnerships

